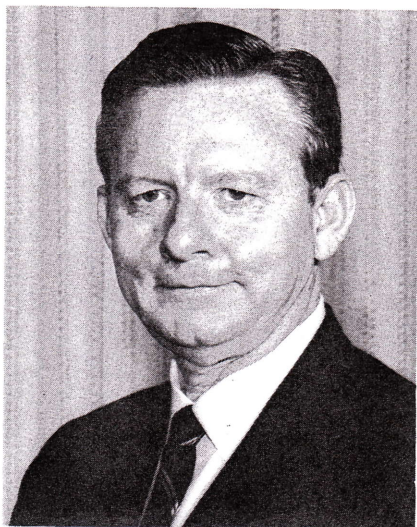


## THE PRINCIPAL SPEAKER



DR. HOMER L. HITT  
*Chancellor, Louisiana State University  
In New Orleans*

A noted social scientist, Dr. Homer L. Hitt is the Chancellor of Louisiana State University in New Orleans. A member of the Louisiana State University system since 1941, he was formerly a dean and later a vice-president of Louisiana State University. Prior to that he was a professor and head of the Departments of Sociology and Rural Sociology, later becoming Associate Dean of the Graduate School.

Dr. Hitt is co-author of the book, *The People of Louisiana*, and is also the author of many published papers dealing with such subjects as economics, education and agriculture. He has served as the editor of professional journals, and as President of the Southern Sociological Society and Vice-President of the Conference of Louisiana Colleges and Universities.

He is the recipient of many honors and awards, including a commendation from the Naval Ordnance Laboratory, and the "Headliner of the Year" Award from the New Orleans Press Club.

Dr. Hitt received his B. S. and M. S. degrees from Louisiana State University in 1933 and 1937, and in 1941 he received both his M. A. and Ph. D. degree from Harvard University.