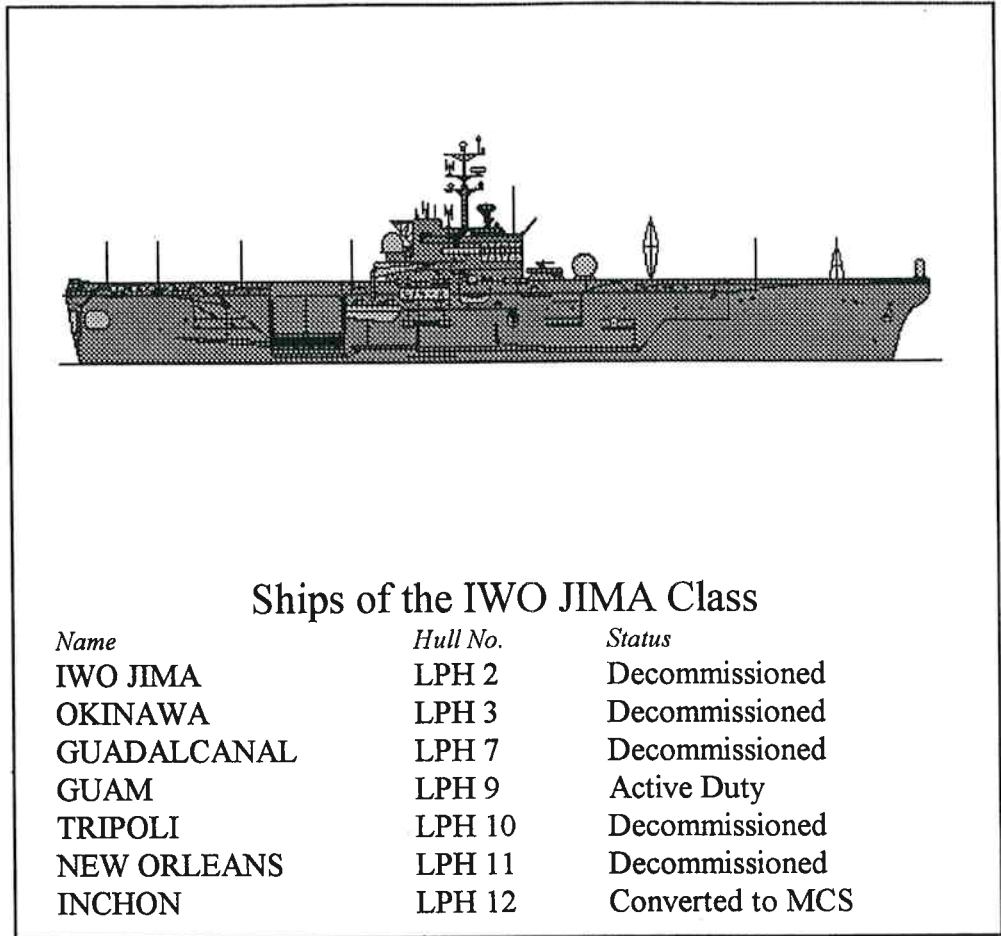


The IWO JIMA Class

The IWO JIMA Class (LPH) Amphibious Assault Ship was created in the early 1960s. The LPH is ideally suited for amphibious assault by the vertical envelopment method. The ship is designed to carry up to 25 helicopters, a Marine battalion landing team and weapons and equipment needed to support them. In addition to its mission as a Marine battalion landing team delivery ship, the LPH class has also served as an amphibious task force control ship, medical duty ship, and a mine countermeasure support ship.

The IWO JIMA Class has a power plant consisting of two boilers and one geared turbine which turn a single shaft with 22,000 shaft horsepower. Its armament includes 3 inch twin barrel guns, the 20mm Vulcan/Phalanx Close-in Weapons System (CIWS) and 50 caliber machine guns. Crew complement is 57 officers, 750 enlisted and up to 2,000 Marine troops.

At least one IWO JIMA Class ship has been present in every major conflict since the Vietnam War. Although the LPH has proven itself to be a reliable performer, the Navy recognized the need for an amphibious assault ship with greater range, capacity, and capabilities, hence the replacement of the LPH with the technologically superior WASP Class (LHD).

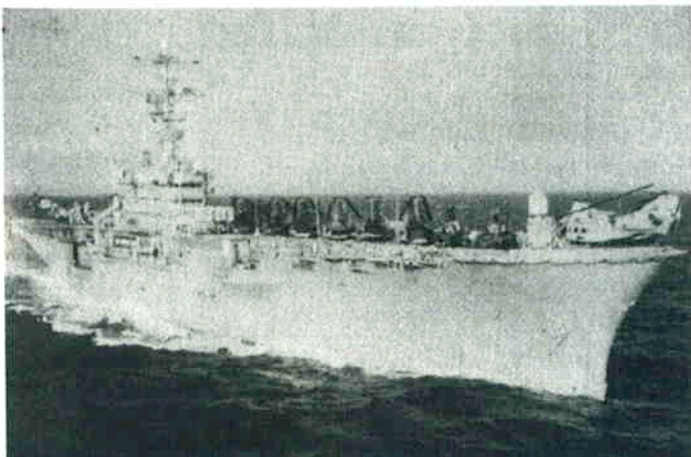


Ships of the IWO JIMA Class

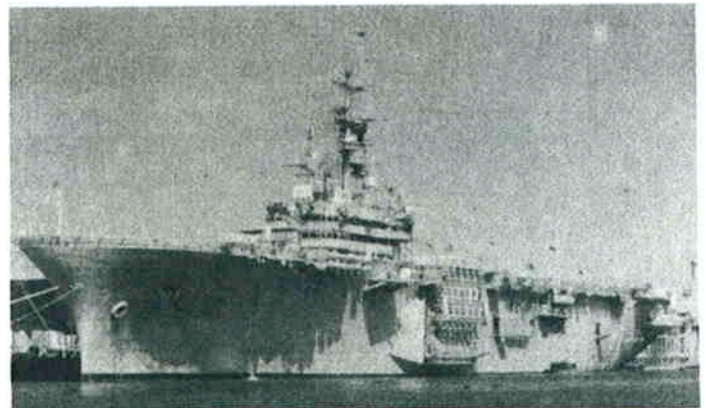
<i>Name</i>	<i>Hull No.</i>	<i>Status</i>
IWO JIMA	LPH 2	Decommissioned
OKINAWA	LPH 3	Decommissioned
GUADALCANAL	LPH 7	Decommissioned
GUAM	LPH 9	Active Duty
TRIPOLI	LPH 10	Decommissioned
NEW ORLEANS	LPH 11	Decommissioned
INCHON	LPH 12	Converted to MCS



USS GUADALCANAL (LPH 7)



USS TRIPOLI (LPH 10)



USS GUAM (LPH 9)